

# Masport®

## CHIPPER SHREDDER

Pt No	Description	Body	Chute	Engine	1st Made	S/N
BIO2017	Green 6.0IC 12	536933	536940	B&S 163cc	July 2012	7635302
BIO2019	Green 6.0IC 12	536932	536940	B&S Intek 60	July 2012	7635277
BIO2021	Green 6.0IC 12	536932	536940	B&S Intek 60	July 2012	7635277
BIO2023	Green 6.0IC 12	536933	536940	B&S 163cc	July 2012	7635302
BIO2026	Green 6.0IC 12	536936	536940	Honda GX160	Aug 2012	7653227
BIO2027	Green 6.0IC 12	536950	536940	Loncin 196cc	Mar 2019	8348940



Issue G.0  
Oct 2021 PB  
ECN # 04333  
IPL Ref # 736932

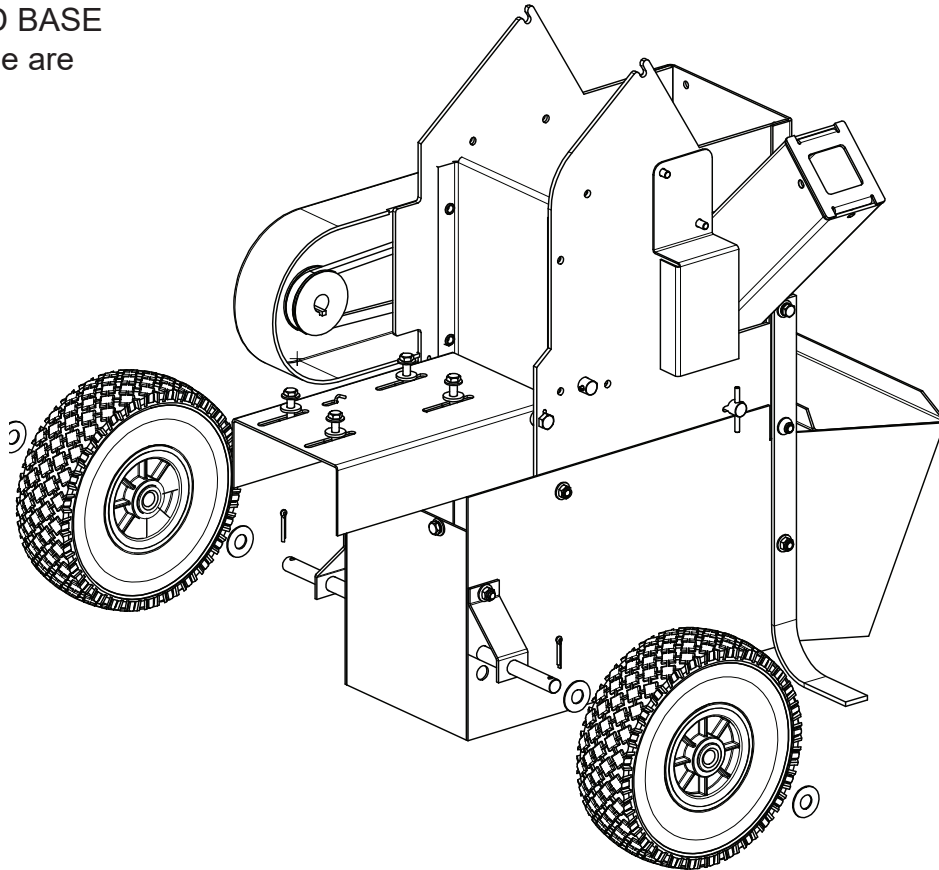


536932  
Chipper Shredder

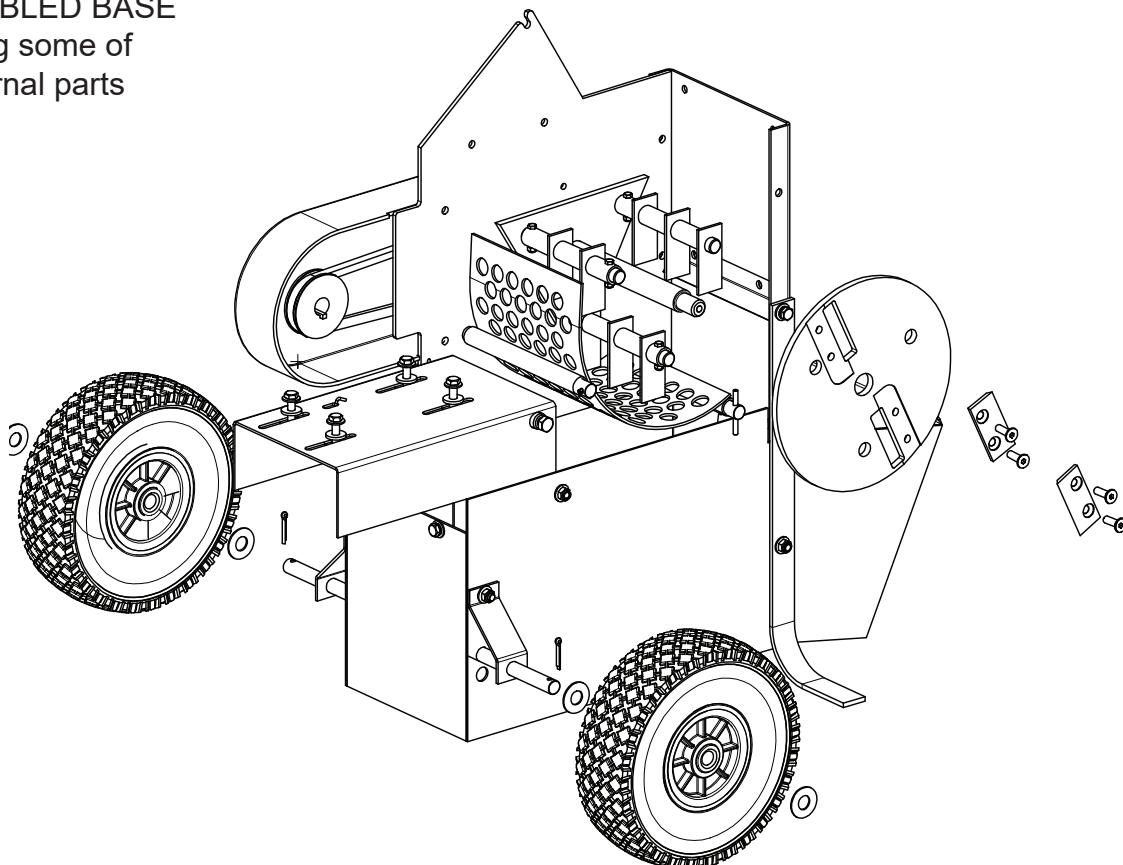
# Masport®

Issue G.0  
Oct 2021 PB  
ECN # 04333  
IPL Ref # 736932

ASSEMBLED BASE  
Wheels & Axle are  
Packaged



ASSEMBLED BASE  
Showing some of  
the internal parts



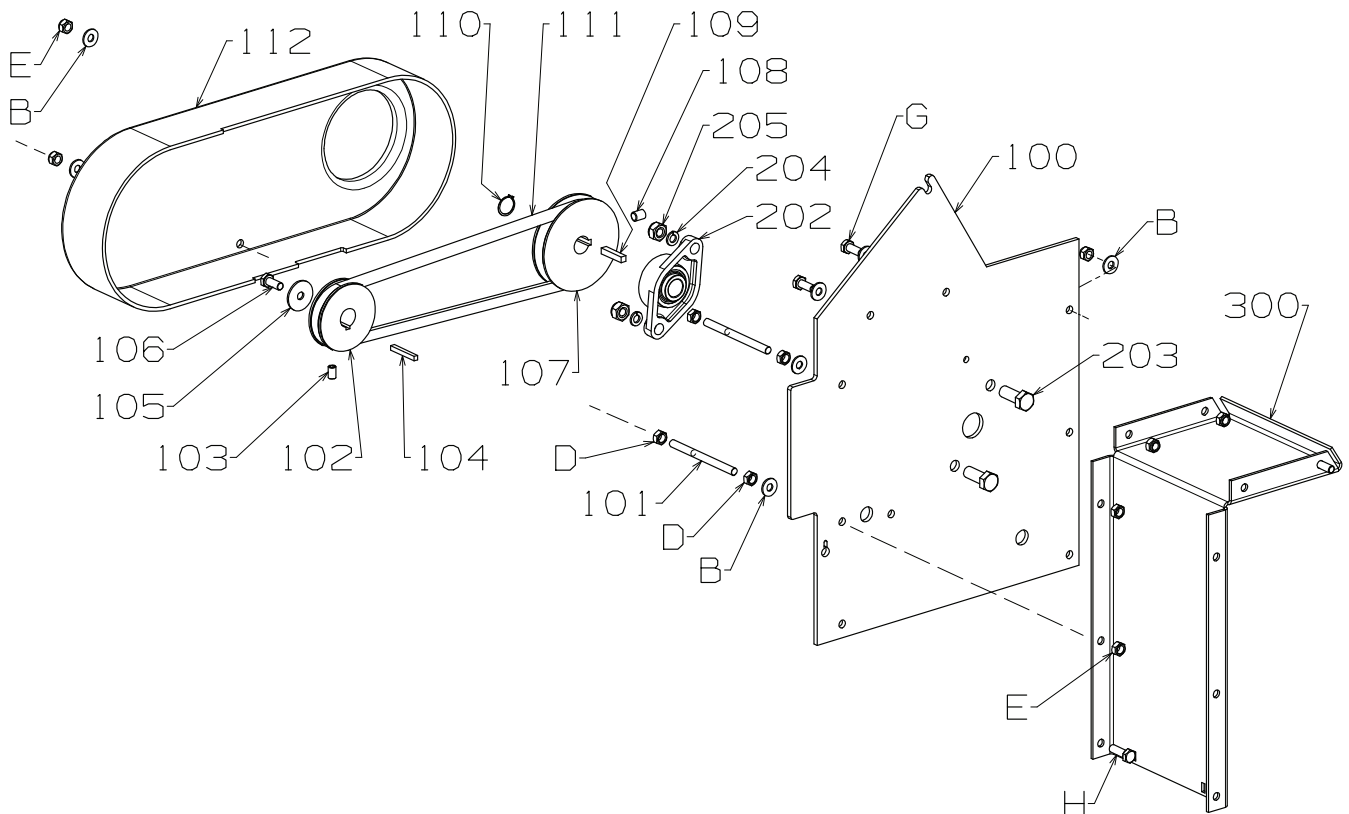


536932  
Chipper Shredder

# Masport®

Issue G.0  
Oct 2021 PB  
ECN # 04333  
IPL Ref # 736932

## LH Side - Exploded View



Item	Part No	Description	Qty	Item	Part No	Description	Qty
100	936003	Plate-Side, LH Green	1	203	503728	Bolt, Hex M12 x 30 Special	2
101	536024	Stud- M8 x 100, Belt Cover	2	204	501759	Washer, Spring 12mm	2
102	536011	Pulley- Engine, 19B x 73D x 34H (Above Pulley used on B&S & Loncin engines)	1	205	501756	Nut, M12 Hex	2
102	536263	Pulley- Engine, 20B x 73D x 33.6H (Above Pulley used on Honda engines)	1	B	501606	Washer, Flat 8 x 19 x 1.6	7
103	503970	Screw, Grub UNC 5/16" x .5	1	D	501602	Nut, M8 Hex	4
104	536012	Key-Engine 3/16" x 38mm (Above Key used on B&S & Loncin engines)	1	E	501793	Nut, M8 Hex Nyloc x 8mm thick	7
104	536264	Key-Engine, Honda (Above Key used on Honda engines)	1	G	501597	Screw, Set M8 x 20 Hex	2
105	572199	Washer, Flat 8 x 32 x 2.0	1	H	501598	Screw, Set M8 x 25	1
106	501116	Screw, Set NF 5/16 x .75 Hex	1				
107	536010	Pulley- Rotor, 3.5"	1				
108	503734	Screw, Grub UNC 3/8" x .5	1				
109	536064	Key- Engine 1/4" SQ x 32	1				
110	503680	Circlip, 19 External	1				
111	536342	Belt- V, A889	1				
112	536015	Cover-Belt	1				
202	503751	Bearing- Complete (Includes Bearing, SKF YAR 204-012-2RF)	1				

When ordering spares: PLEASE QUOTE PART NUMBER & DESCRIPTION, NOT illustrated number. Item Qty = 1 per part unless stated differently.  
**BOLD TEXT** = Assemblies. Descriptions starting with \* = items included in the assemblies & may not be available as a spares item.  
 Determine the left or right hand sides by standing in the operating position (standing at the handle).

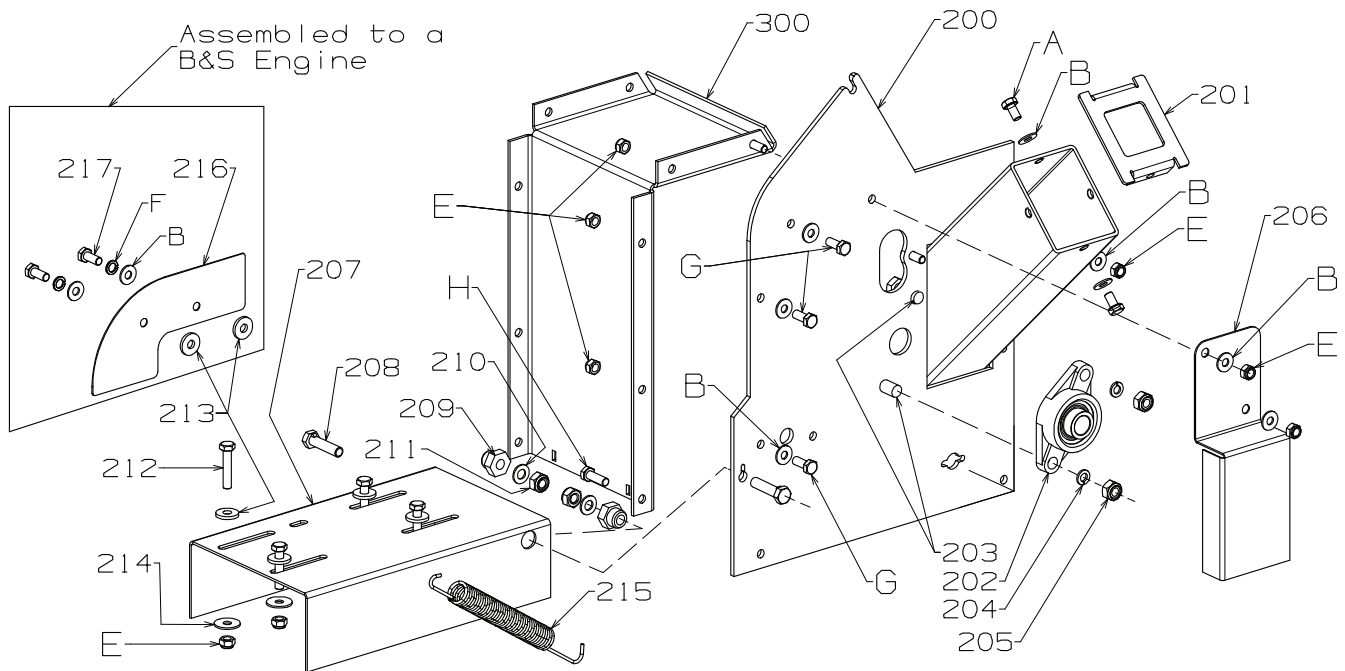


536932  
Chipper Shredder

# Masport®

Issue G.0  
Oct 2021 PB  
ECN # 04333  
IPL Ref # 736932

## RH Side - Exploded View

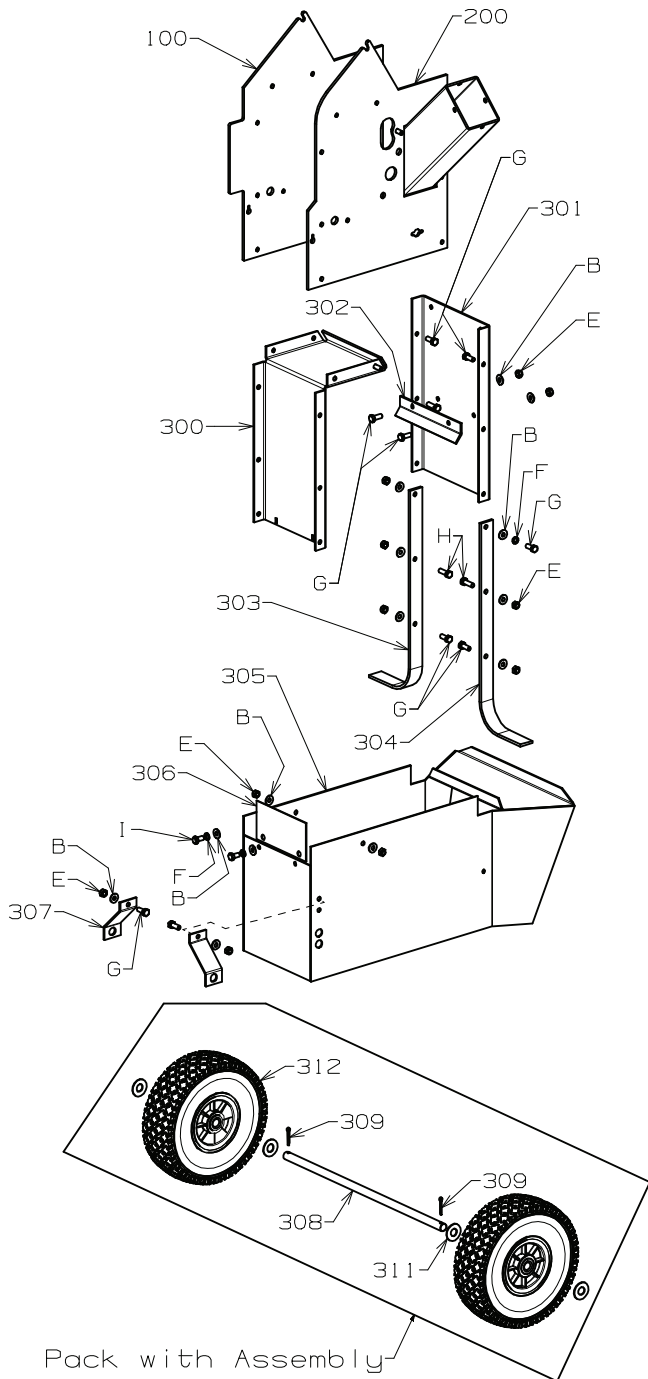


Item	Part No	Description	Qty	Item	Part No	Description	Qty
200	936378	Plate Assy- Side, RH Green C/S	1	A	501571	Screw, Set M8 x 16 8.8 Hex Black	2
201	536375	Restrictor- Infeed Tube Black	1	B	501606	Washer, Flat 8 x 19 x 1.6	10
202	503751	Bearing- Complete (Includes Bearing, SKF YAR 204-012-2RF)	1	E	501793	Nut, M8 Nyloc x 8mm thick	10
203	503728	Bolt, Hex M12 x 30 Special	2	F	503747	Washer Spg, 8	2
204	501759	Washer, Spring 12mm	2	G	501597	Screw, Set M8 x 20 Hex	3
205	501756	Nut, M12 Hex	2	H	501598	Screw, Set M8 x 25	1
206	936117	Plate- Cover, Maintenance/Bearing	1				
207	936034	Plate- Mount, Engine Green	1				
208	503731	Bolt, Hex Special M10 x 40	2				
209	936035	Bush- Pivot, Engine	2				
210	501704	Washer, Flat 10 x 19 x 1.6	2				
211	501680	Nut, M10 Hex Nyloc x 10mm thick	2				
212	501843	Screw, Set M8 x 40 Hex	4				
213	503872	Washer, Flat 8 x 20 x 3.0	6				
214	503746	Washer, Flat 8 x 25 x 1.6	4				
215	536008	Spring- Belt Tensioner	1				
216	536324	Plate- Safety, Engine Black	1				
217	501116	Screw, Set NF 5/16 x .75 Hex	2				

When ordering spares: PLEASE QUOTE PART NUMBER & DESCRIPTION, NOT illustrated number. Item Qty = 1 per part unless stated differently.  
**BOLD TEXT** = Assemblies. Descriptions starting with \* = items included in the assemblies & may not be available as a spares item.  
 Determine the left or right hand sides by standing in the operating position (standing at the handle).



## Body - Exploded View



Item	Part No	Description	Qty
300	936556	Plate Assy- Rear, Green	1
301	936018	Plate- Front, Green	1
302	536021	Plate-Stop, Shredder	1
303	936078	Leg- Front, LH Euro Green	1
304	936079	Leg- Front, RH Euro Green	1
305	936073	Chute- Discharge, Euro Green	1
306	936554	Plate-Safety, Discharge Green	1
307	936080	Support-Axle, Euro Green	2
308	536595	Axle- Long, Euro	1
309	500029	Pin, Cotter 4.0 dia x 25	2
311	502017	Washer, Flat 16 x 32 x 1.6	4
312	549984	Wheel Assy-257mm PP+PU Foam	2
B	501606	Washer, Flat 8 x 19 x 1.6	14
E	501793	Nut, M8 Nyloc x 8mm thick	11
F	503747	Washer Spg, 8	3
G	501597	Screw, Set M8 x 20 Hex	10
H	501598	Screw, Set M8 x 25	2
I	501571	Screw, Set M8 x 16 Hex	2

### Note

The above wheels will not back fit to older models.  
If this is a requirement, order KIT 736596  
(Includes items 2 x 309, 311, 312 & 1 x 308)

### Note

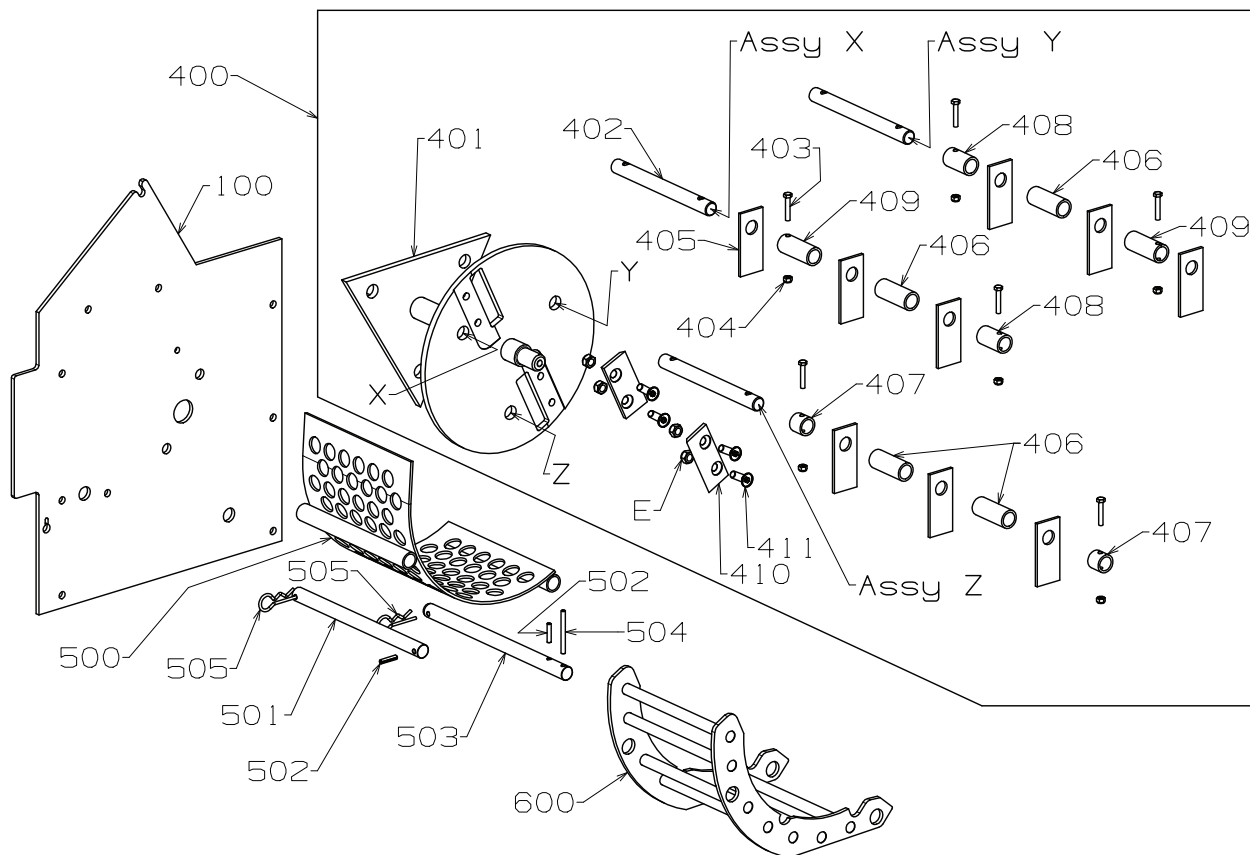
The replacement of the Pneumatic Wheels  
started from  
BIO2121 536932 Serial Number 8575400  
BIO2126 536936 Serial Number 8603675  
BIO2127 536950 Serial Number 8575321





## Rotor - Exploded View

After assembling the flail rods, it is important that the X, Y & Z positions are observed



Item	Part No	Description	Qty	Optional Accessory if not included with this assembly	
400	936196	<b>Cutter Assy- B/Drive, 6.5XL 2Blid</b>	1	600 929304 Bar Grate Screen Assy	1
401	536195	*Rotor Assy- B/Drive, Twin Shred	1		
402	536029	*Rod Assy- Shredder	3		
403	503678	*Bolt, M5 x 28 8.8 HEX	6		
404	503511	*Nut, Nyloc M5	6		
405	536030	*Blade- Flail, Shredder	9		
406	536045	*Spacer-Blade, 21.3 x 51- Plain	4		
407	536043	*Spacer-Blade, 21.3 x 18- Drilled	2		
408	536042	*Spacer-Blade, 21.3 x 36- Drilled	2		
409	536044	*Spacer- Blade, 21.3 x 51 Drilled	2		
410	536027	*Blade-Chipper - 75mm	2		
411	599501	*Screw, CSK M8 x 25	4		
500	536371	Plate Assy, Shredder	1		
501	936017	Rod- Shredder Plate, Rear	1		
502	503369	Pin, Tension 5.0 x 22	2		
503	936016	Rod-Shredder Plate, Front	1		
504	031290	Pin, Tension 5.0 x 50	1		
505	536028	Clip-Hairpin, 3mm	2		
E	501793	Nut, M8 Hex Nyloc x 8mm thick	4		

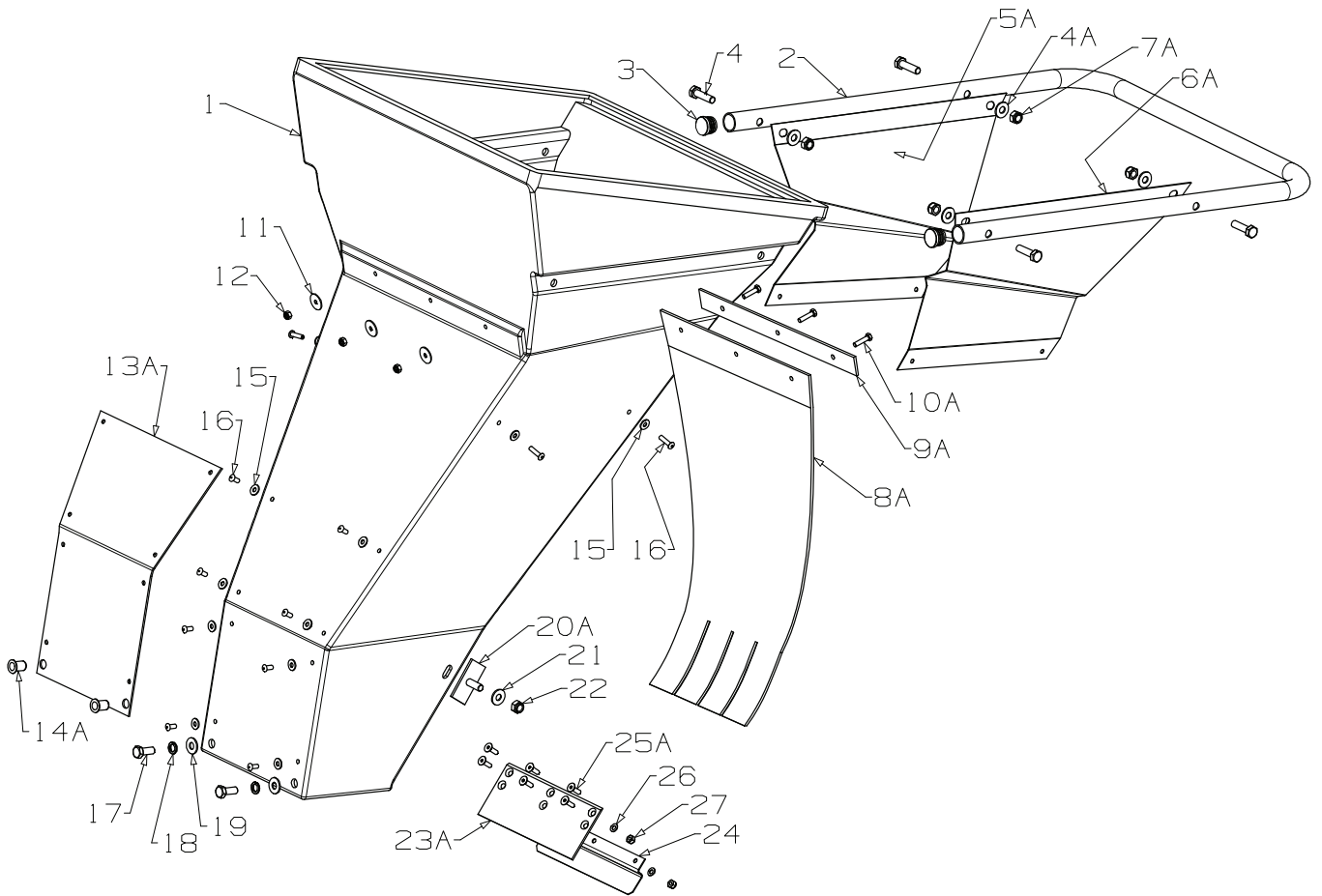


536932  
Chipper Shredder

# Masport®

Issue G.0  
Oct 2021 PB  
ECN # 04333  
IPL Ref # 736932

## 536940 - Chute Assembly Shredder Masport



Items with # A are assembled inside the Chute

Fastener Pack Included Containing Items:  
17, 18, 19, 20A, 21 & 22

Item	Part No	Description	Qty	Item	Part No	Description	Qty
1	536058	Chute- Shredder, Euro Black	1	15	500848	Washer, Flt 3/16 x .5 x .039	12
2	936285	Handle- Chute, Blk	1	16	503660	Rivet-Pop, 4.8 Dia x 9.0	12
3	503319	Plug- 22mm, Plastic	2	17	501598	Screw, Set M8 x 25 Hex	2
4	501716	Screw, Set M8 x 35 Hex	4	18	503747	Washer, Spg 8	2
4 A	501606	Washer, Flt 8 x 19 x 1.6	4	19	501606	Washer, Flt 8 x 19 x 1.6	2
5 A	536386	Plate Restrictor Infeed RH	1	20 A	536065	Retainer-Chute	2
6 A	536387	Plate Restrictor Infeed LH	1	21	501606	Washer, Flt 8 x 19 x 1.6	2
7 A	501793	Nut, M8 Hex Nyloc	4	22	501793	Nut, M8 Hex Nyloc	2
8 A	536376	Flap- Chute, Rubber	1	23 A	536315	Plate- Protector, Back	1
9 A	536377	Plate- Kickback, Black	1	24	536316	Bracket- Protector, Back	1
10 A	503727	Screw, Set M5 x 20 Hex	3	25 A	503983	Screw, CSK M5 x 16 Allen	6
11	503512	Washer, Flat 5 x 22 x 1.5	3	26	501330	Washer, Flt 5 x 10 x 1.0	6
12	503511	Nut, M5 Hex Nyloc	3	27	503511	Nut, M5 Hex Nyloc	6
13 A	536061	Plate-Protector, Front	1				
14 A	503682	Nut, M8 Nutsert	2				



536932  
Chipper Shredder

# Masport®

Issue G.0  
Oct 2021 PB  
ECN # 04333  
IPL Ref # 736932

536940 - Chute Assembly  
Decal Map

700	536126	Decal, Danger Chipper Inlet	1
701	536127	Decal, Danger, Discharge Opening	1
702	536203	Decal, Twin Blades	1
703	536389	Decal, Chute-Safety	1
704	536553	Decal, Caution, Guard	1
705	536390	Decal, Noise, Chipper	1
706	536123	Decal, Danger Chute	1
707	536180	Decal, Chute MASPORT	1



706 Inside Chute  
this face

707



704 Located on the  
Belt Cover

702

705

700

701



703

Not Illustrated

536388	Owners Manual- EURO	1
--------	---------------------	---