

Masport®

ROTARY MOWERS

SERIES 21

Part Number
564953

Model
Contractor ST S21 3'n1 SP

Engine
Kawasaki FJ180

Month and Year of First Manufacture - Oct 2016

Starting Serial Number - 8078628

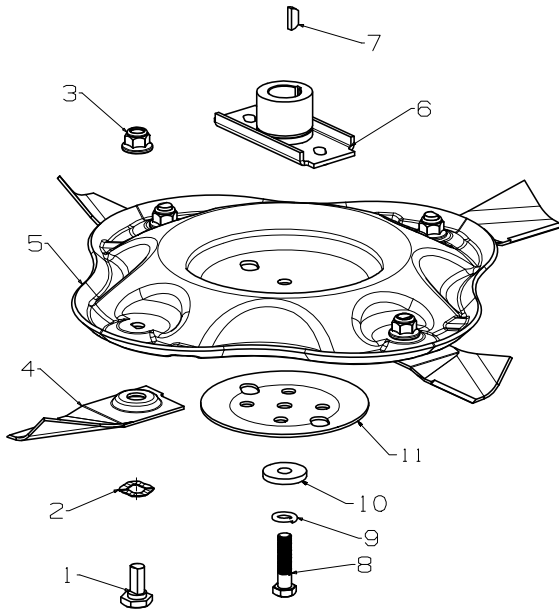


Issue E.2
ECN 04152
Oct 2019 PB
REF # 764953S



S21 Contractor ST SP 3'in1

540mm Disc Blade Assembly - Wavy

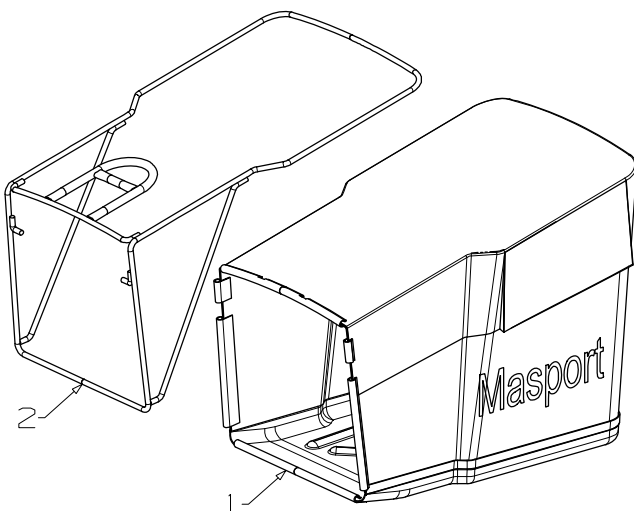


Item No	Part No	Description	Qty Req'd
1	581707	Bolt- Pivot M10 x 22	4
2	580693	Washer, Wavy 13.4 x 24.2	4
3	503672	Nut, M10 Hex Nyloc Flange	4
4	579749	Blade- Quick Cut, 540mm	4
5	783314	KIT-Disc Blade Wavy (Includes items: 8, 9, 10, 11)	1
6	031640	Driver Assy-Blade - 25mm	1
7	503363	Key, Woodruff - 5/8"x3/16"x1/4"	1
8	503543	Bolt; Hex NF 3/8" x 1.5 NYG8	1
9	500204	Washer, Spring 3/8"	1
10	503855	Washer, Flat 9.75 x 30 x 4.0	1
11	567332	Plate- Stiffener, Disc Blade Assy	1

Blade & Bolt Sets

- 783692 Bolt Set (4)**
Includes Items: 1, 2, 3
- 767390 Blade-Quick Cut (4) 540mm**
Includes Items: 1, 2, 3, 4
- 773251 Disc Assy- Wavy (4 Blade) 540mm**
Includes Items: 1, 2, 3, 4, 5, 8, 9, 10, 11

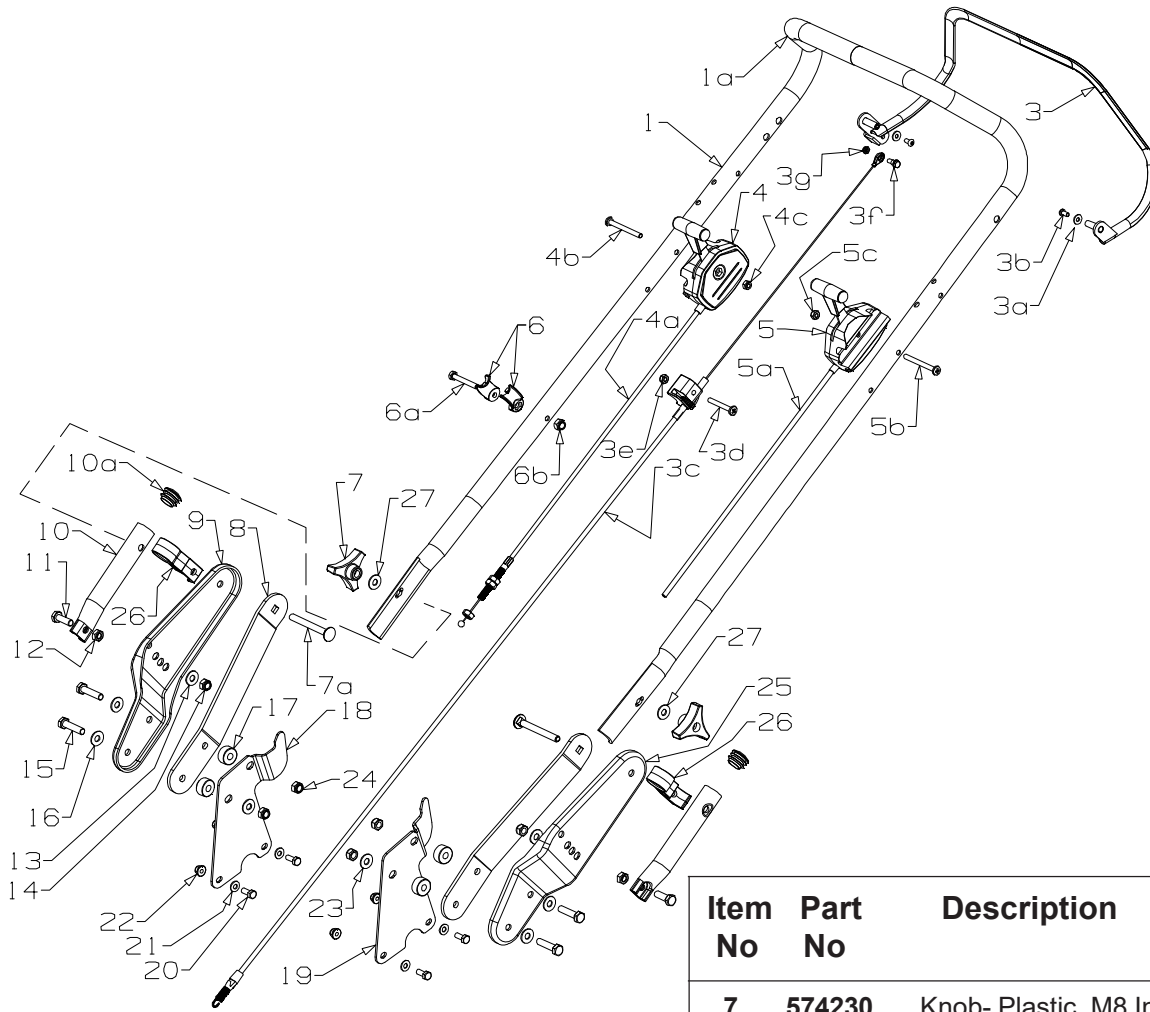
774827 Catcher Assembly - Bag Contractor 21" (Includes items 1 & 2)



Item No	Part No	Description	Qty
1	574827	Bag Assy - Contr 21" R NZ	1
2	574482	Frame Assy Contractor	1



S21 Contractor ST SP 3'n1



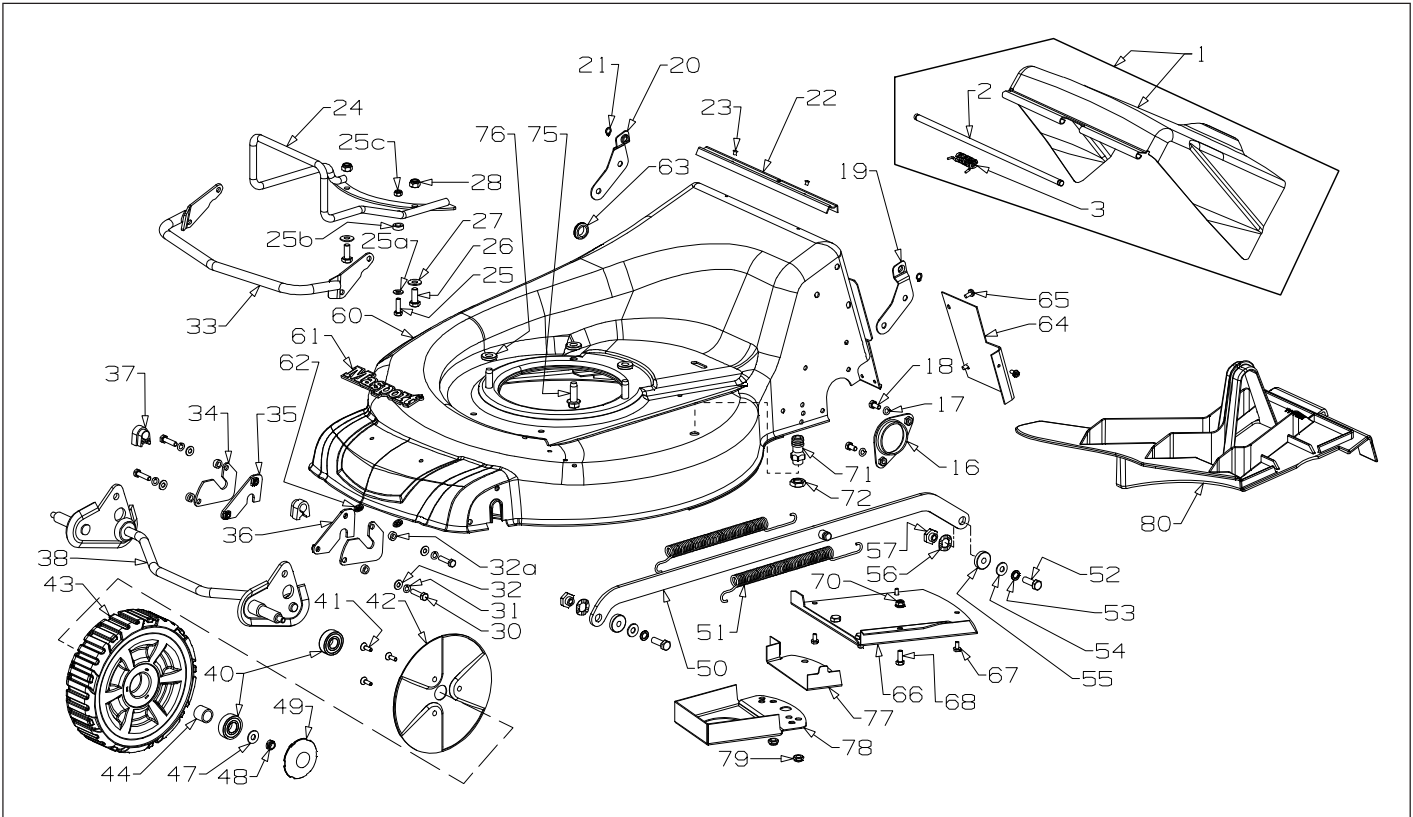
Item No	Part No	Description	Qty
7	574230	Knob- Plastic, M8 Insert	2
7a	502177	Bolt, Carriage M8 x 75	2
8	574128	Brace- Handle Bkt Adj, Contr	2
9	964082	Bracket- Handle Adjustable, RH	1
10	974129	Handle- Lower, Stub S21 Stl Blk	2
10a	572270	Plug- 25.4mm Black Plastic	2
11	501598	Screw, Set M8 x 25	2
12	501602	Nut, M8 Hex	2
13	501606	Washer, Flat 8 x 19 x 1.6	2
14	501793	Nut, M8 Hex Nyloc x 8mm thick	2
15	501685	Screw, Set M8 x 30 Hex	4
16	501606	Washer, Flat 8 x 19 x 1.6	4
17	574134	Spacer- Pulley, 8.5 x 19 x 4	4
18	574140	Bracket- Catcher Mount, RH	1
19	574139	Bracket- Catcher Mount, LH	1
20	501702	Screw, Set M6 x 16 Hex	4
21	501703	Washer, Flat 6 x 14 x 1.2	4
22	503973	Nut, M6 Hex Nyloc Flanged	4
23	501606	Washer, Flat 8 x 19 x 1.6	2
24	501793	Nut, M8 Hex Nyloc x 8mm thick	4
25	964083	Bracket- Handle Adjustable, LH	1
26	572447	Retainer- Control Cable, Contr	2
27	501606	Washer, Flat 8 x 19 x 1.6	2

Item	Part	Description	Qty
1/1a	764088	Handle & Sleeve, OPC/SFT/BLK	1
3	764336	Bail Arm Assy, SP RH Contr	1
3a	500848	*Washer, Flat 3/16 x 0.5 x .039	2
3b	502115	*Screw, Set M5 x 10 Btn/Hd	2
3c	564339	Cable-Clutch, ThumbWheel G/Box	1
3d	502181	Screw, Pan M6 x 50	1
3e	501764	Nut, M6 Hex Nyloc x 6mm thick	1
3f	502237	Bolt, M5 Hex Fl/Hd Shouldered	1
3g	502238	Nut, M5 Hex Nyloc x 5mm thick	1
4/4a	765392	Cable-SPV Con/Adj & Ctrl Assy	1
(This mower from S/N 8307500 introduced spares item 765392)			
4	574272	*Control- Speed x 3 SP UPT HNDL	1
4b	502198	*Screw, Pan M6 x 60	1
4c	501764	*Nut, M6 Hex Nyloc x 6mm thick	1
5/5a	583460	Throttle Ctrl & Cable -VE CH"T"	1
5b	502198	*Screw, Pan M6 x 60	1
5c	501764	*Nut, M6 Hex Nyloc x 6mm thick	1
6	782546	Comfort Start Kit	1
6a	503558	*Screw, Set M6 x 45	1
6b	501764	*Nut, M6 Hex Nyloc x 6mm thick	1

When ordering spares: PLEASE QUOTE PART NUMBER & Description, NOT Illustrated Number. Item Qty = 1 per part unless stated differently.
Bold Text = Assemblies. Text starting with * = Items included in the Assemblies & may not be available as a spares item.
 Determine the left hand or right hand sides by standing in the operating position (standing at the handle).



S21 Contractor ST SP 3'n1

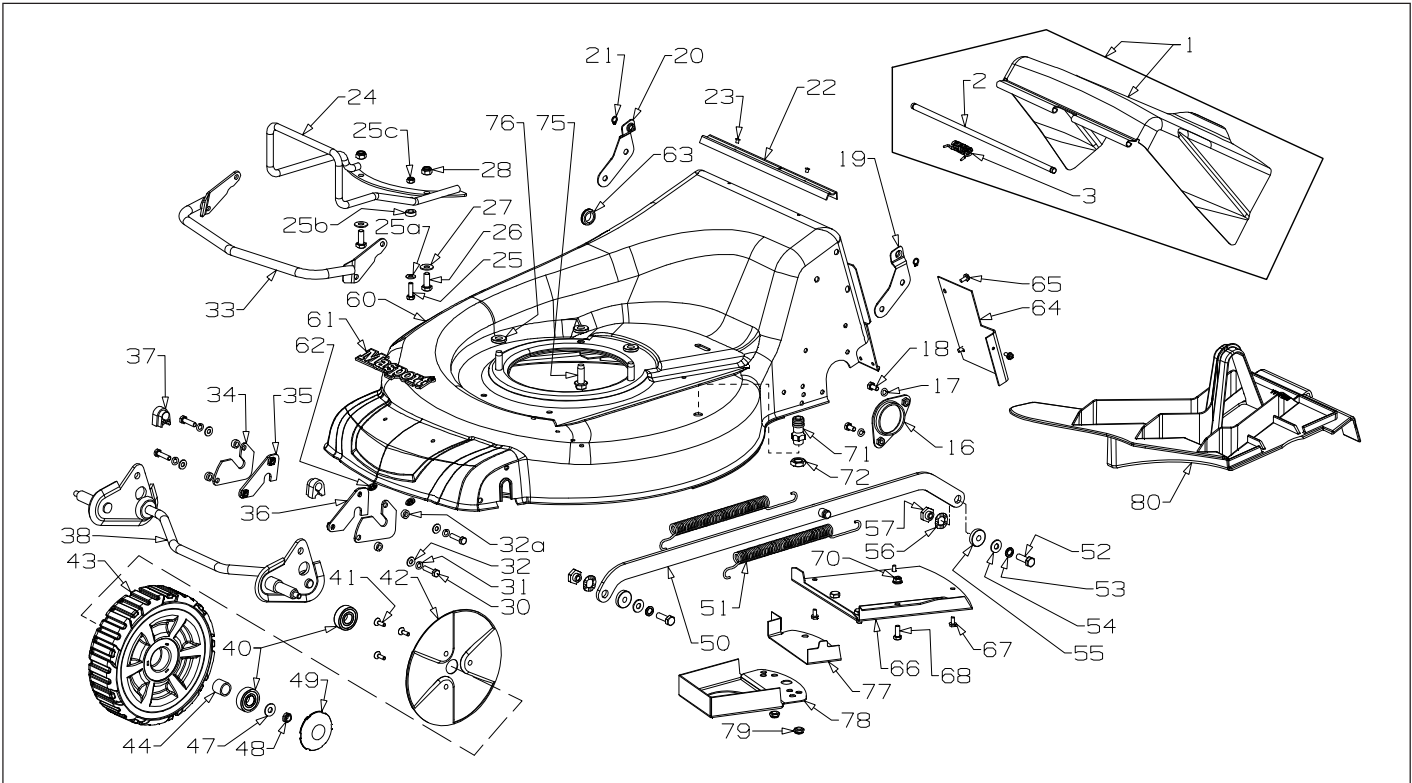


Item	Part	Description	Qty	Item	Part	Description	Qty
1	764454	Flap Assy- Steel, Contractor	1	37	580030	Bush- Pivot, Axle	2
2	764480	*Wire- Flap Pivot 325 x 8 CCL	1	38	565150	Axle Assy- Front, Contr 21" LC	1
3	579213	*Spring- Flap, 19/21 Ali	1	Note, Axle Assy-Front has been replaced from S/N 8290187			
16	581178	Retainer- Axle, Rear	2	To supersede to the new Axle Assy, you will require part:			
17	500201	Washer, Spg 6	4	765150 Axle Assy- Front, Contr Kit 21" LC			
18	501959	Screw, Set M6 x 12 Hex	4	This assy contains full instructions including parts 32a,37,38,50			
19	579209	Bracket - Flap, LH 19"	1	40	567564	Bearing- Wheel, 6202-2RS	4
20	579210	Bracket - Flap, RH 19"	1	41	502267	Screw, Csk M5 x 12 Allen Head	6
21	502219	Circlip, 08 Ext DIN 471	2	42	574426	Cover- Inner Wheel, Front	2
22	579211	Seal Flap Dust	1	43	764670	Wheel Assy- 200 x 58mm	2
23	581369	Rivet Pop 4.0 x 3.2 73SS5-2	2	(Includes 1 x 564039 & 2 x 567564 per wheel)			
24	974518	Guard- Bumper, Assy	1	44	564039	Spacer- Wheel O/D19 x 18L	2
25	501600	Screw, Set M6 x 20 Hex	1	47	501606	Washer, Flat 8 x 19 x 1.6	2
25a	501703	Washer, Flat 6 x 14 x 1.2	1	48	503831	Nut, M8 Hex Nyloc x 6mm thick	2
25b	569334	Spacer- Wear Plate 19" x 6mm	1	49	567637	Hub- Cap, Contractor	2
25c	501764	Nut, M6 Hex Nyloc x 6mm thick	1	50	565153	Rod- Connecting, 21" Contr LC	1
26	502106	Screw, Set M8 x 16 Hex	2	This mower with serial numbers 8078628 ~ 8208444 used			
27	501606	Washer, Flat 8 x 19 x 1.6	2	51	569035	Spring- Counter Balance	2
28	501793	Nut, M8 Hex Nyloc x 8mm thick	2	52	501598	Screw, Set M8 x 25 Hex	2
30	501963	Screw, Set M6 x 25	4	53	503747	Washer, Spg 8	2
31	500201	Washer, Spg 6	4	54	501606	Washer, Flat 8 x 19 x 1.6	2
32	501703	Washer, Flat 6 x 14 x 1.2	4	55	583448	Spacer	2
32a	565269	Spacer- Axle Contr 5 x 7 x 12	4	56	580693	Washer, Wavy 13.4x24.2x .51	2
33	974110	Guard- Bumper, Assy	1	57	574208	Nut- Pivot, Con-Rod	2
34	574120	Plate- Retainer, Axle Front/Inner	2				
35	574122	Plate- Retainer, Axle Front/RH	1				
36	574121	Plate- Retainer, Axle Front/LH	1				

When ordering spares: PLEASE QUOTE PART NUMBER & Description, NOT Illustrated Number. Item Qty = 1 per part unless stated differently.
Bold Text = Assemblies. Text starting with * = Items included in the Assemblies & may not be available as a spares item.
 Determine the left hand or right hand sides by standing in the operating position (standing at the handle).



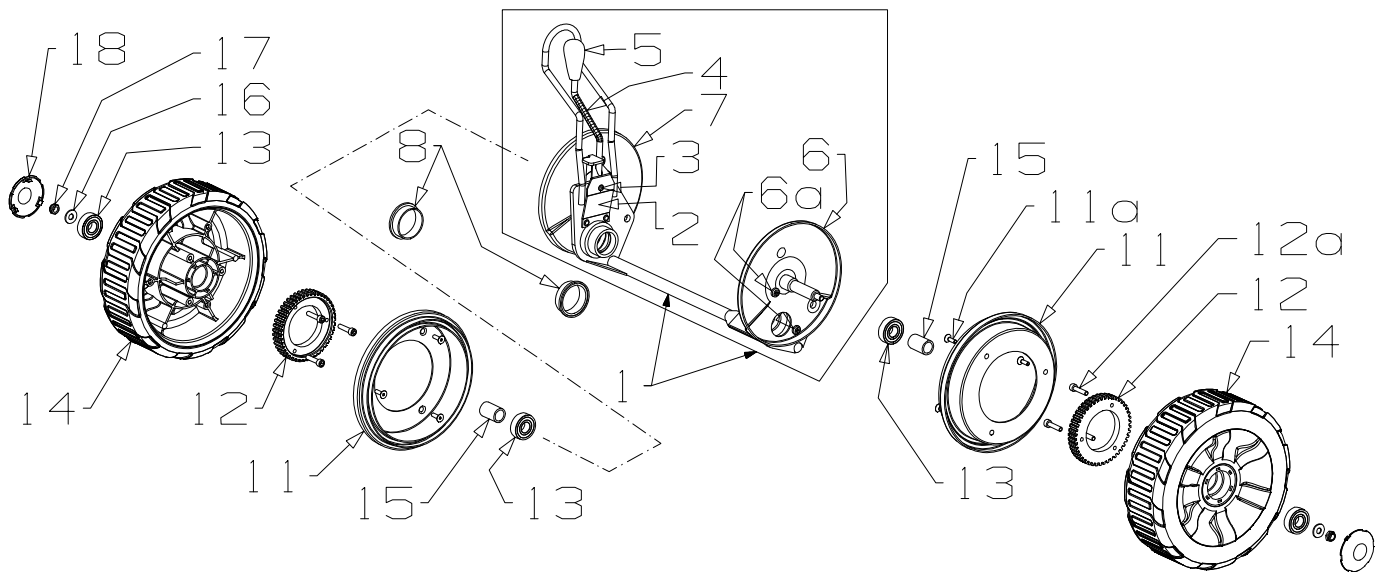
S21 Contractor ST SP 3'n1



Item	Part	Description	Qty	Item	Part	Description	Qty
60	774091	HSG-StIT 21" XFQ SPV M/VPR (Includes items 61,62,63,64,65,71 & 72)	1	70	503973	Nut, M6 Hex Nyloc Flanged	1
61	581240	Nameplate- MASPORT	1	71	503783	Cyclowash- Fitting	1
62	503150	Clip- Starlock, 5 dia	2	72	596547	Nut; BSP 1/4" Hex (This mower after S/Number 8307457 items 71/72 added)	1
63	502179	Grommet- Clutch Cable,20x16x6	1	75	580453	Screw, S/T 3/8x1-1/8 UNC TRIBLK	3
64	574249	Tunnel- G/Box Cover 21" Stl	1	76	503419	Spacer- Base, 10 x 23 x 3.0	3
65	503630	Screw, S/T 10 x .4 Typ B	3	77	567413	Cover- Belt, SPV Ext Syncro	1
66	964018	Cover- Belt, 21" ST Syncro	1	78	567412	Cover- Belt, SPV 21" Syncro	1
67	503630	Screw, S/T 10 x .4 Typ B	3	79	503831	Nut, M8 Hex Nyloc x 6mm thick	2
68	501702	Screw, Set M6 x 16 Hex	1	80	773389	Insert- Mulching, 21" Assy	1

NOT ILLUSTRATED

503054	Tie- Nylon Cable, Black	4	Items below are placed into the Owner's Manual Bag 574634 Instruct, Handle Knob Replace 1 502274 Bolt, Carriage M8 x 55 2 503747 Washer, SPG 8 2 501606 Washer, Flat 8 x 19 x 1.6 3 503526 Nut, M6 Dome 2			
573045	Decal, Noise S21 W/C 98db	1				
573198	Decal, HSG "Self Propelled"	1				
574263	Decal, Housing Contractor	1				
574267	Instruct, Sheet	1				
580778	Rope - Stop	1				
582241	Decal, Flap Caution 5T	1				
582062	Decal, Height Combo	1				
583152	Owner Manual	1				

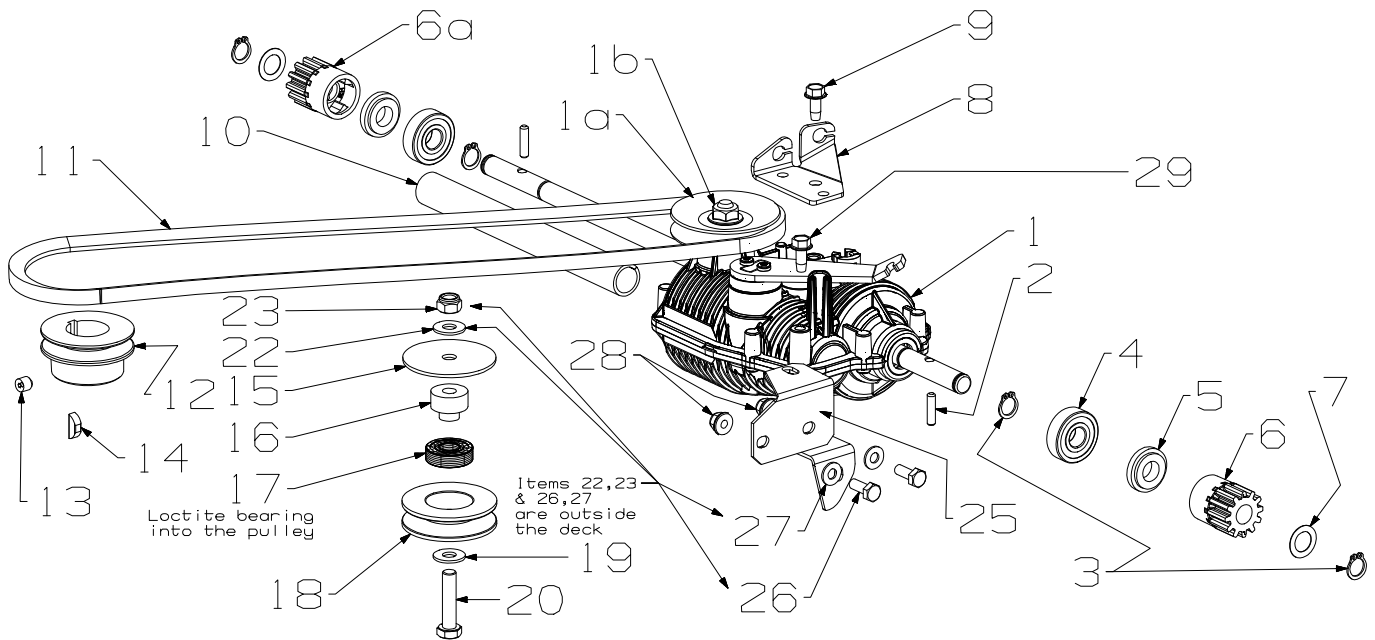


Note, Axle Assy-Rear has been replaced from Serial Number 8290187
To replace or supersede to the new Rear Axle Assy, you will require:
765271 Axle Assy- Rear SP, Contr Kit LC
This assembly contains full instructions along with item 1, 6, 6a & 7

Item No	Part No	Description	Qty	Item No	Part No	Description	Qty
1	765267	Axle Assy- Rear, SP Contr V2	1	11	567612	Seal- Wheel, Contr	2
2	580649	*Spring- Leaf	1	11a	502267	Screw, C/Sink M5 x 12 Allen Hd	6
3	503373	*Rivet- Flat Head 3/16" x 27/64"	3	12	571272	Gear- Driving, Cont 45 teeth	2
4	574235	*Rod- Height Select, LC Contr	1	12a	503962	Screw, Cap M6 x 25	6
5	581729	*Knob- Height Lever, Adj	1	13	567564	Bearing- Wheel, 6202-2RS	4
6	565262	Cover- Dust, LH Contr V2	1	14	767559	Wheel Assy, 235 x 75 contr	2
6a	503591	Screw, Pan M6 x 12	4	(Includes 2 x 567564 & 1 x 567639 per wheel)			
7	565263	Cover- Dust, RH Contr V2	1	15	567639	Spacer- Wheel, Length 30mm	2
8	580091	Bush- Pivot, Rear Axle	2	16	501606	Washer, Flat 8 x 19 x 1.6	2
				17	503831	Nut, M8 Hex Nyloc x 6mm thick	2
				18	567637	Hub Cap, Contractor Blk	2



S21 Contractor ST SP 3'n1



Note, For this mower, Serial Numbers 8078628 ~ 8208444 the gearbox 564087 and 2 x pawls 581092 have been replaced by the gearbox as shown above and items 1 & 2 below.

For a replacement gearbox use:

774787 Gearbox Assy-3SP MG512 PIN 21"

(Includes 2 x 574788)

Item No	Part No	Description	Qty	Item No	Part No	Description	Qty
1	774787	Gearbox- 3 Speed, MG512 PIN 21"	1	13	503386	Screw, Grub M8 x 8	1
1a	565391	*Pulley- (Half) GBX, GT Part # 33136	2	14	503363	Key, Woodruff 5/8 x 3/16 x 1/4	1
1b	502310	*Nut, Locking GT Part No 42811	1	15	502290	Washer, Flat 8 x 55 x 2.0	1
2	574788	*Pin- Drive, Non Broach 3SP G/Box	2	16	574273	Spacer- Idler, SPV M8	1
3	503759	Circlip, 12 EXT DIN 471	4	17	503901	Bearing- Ball, 12x28x8 6001-2RSH	1
4	501213	Bearing, 12 x 32 x 10 6201 2RS	2	18	573383	Pulley- V, Idler	1
5	581093	Cap, Pinion 950 SP Plastic	2	19	501606	Washer, Flat 8 x 19 x 1.6	1
6	569178	Pinion, LH 12 Teeth	1	20	501716	Screw, Set M8 x 35 Hex	1
6a	569179	Pinion, RH 12 Teeth	1	22	501606	Washer, Flat 8 x 19 x 1.6	1
7	503102	Washer, Flat 12 x 20 x 0.4	2	23	501793	Nut, M8 Hex Nyloc x 8mm thick	1
8	564249	Bracket- Cable Mount	1	25	567557	Bracket- G/Box Mount, Contr	1
9	501599	Screw; S/Tapping 1/4" x 5/8"	1	26	501702	Screw, Set M6 x 16 Hex	2
10	574319	Sleeve, Rear Axle 3 Speed	1	27	501703	Washer, Flat 6 x 14 x 1.2	2
11	564358	Belt-V EX-PWRV10 x 875 Gat Notch	1	28	503973	Nut, M6 Nyloc Flange	2
12	574237	Pulley- Eng 25b x 55d x 28h	1	29	501599	Screw; S/Tapping 1/4" x 5/8"	1